

Standalone clinical images may have been cropped to better visualize pathology.

ACUSON X Family, ACUSON X700, Advanced SieClear, *fourSight* and Dynamic TCE are trademarks of Siemens Medical Solutions USA, Inc, and *syngo* is a trademark of Siemens AG.

Global Siemens Headquarters

Siemens AG
Wittelsbacherplatz 2
80333 Muenchen
Germany

**Global Siemens
Healthcare Headquarters**

Siemens AG
Healthcare Sector
Henkestrasse 127
91052 Erlangen
Germany
Phone: +49 9131 84-0
www.siemens.com/healthcare

Legal Manufacturer

Siemens Medical Solutions USA, Inc.
Ultrasound
685 E. Middlefield Road
Mountain View, CA 94043
USA
Phone: 1-888-826-9702
www.siemens.com/ultrasound



A Siemens ACUSON X700 Ultrasound System is shown from a three-quarter perspective. The machine is dark grey with teal accents on the control panel and handrails. A large monitor is mounted on top, displaying medical images and data. The control panel features a keyboard, a trackball, and numerous buttons and knobs. The Siemens logo is visible on the front of the control panel.

SIEMENS

Explore more. Experience More.
Expect more.

ACUSON X700 Ultrasound System

www.siemens.com/ultrasound

Answers for life.

ACUSON X700 Ultrasound System



Excellent image quality. Innovative design. Robust technologies. Future functionality.

The ACUSON X700™ ultrasound system delivers a whole new imaging experience. Built around the latest imaging technologies, equipped with a rich set of standard features and designed for the ultimate in comfort and usability, the ACUSON X700 system is the premier member in the ACUSON X Family™ of ultrasound systems. It redefines the ultrasound experience providing exceptional performance *and* value.

SIEMENS



Report Patient Data Patient Browser Exam / Quick Set Presets Help Video I/O Arrow Insert Home Home Set Delete Word Clear Screen Biopsy

| | | | | | | | | | | | |
|------|-----|-----|---|---|---|---|---|--------|--------|---|---|
| ⏪ | 1 | 2 | 3 | 4 | 5 | 6 | 7 | 8 | 9 | 0 | ← |
| ⇐ | Q | W | E | R | T | Y | U | I | O | P | ↵ |
| ⏩ | A | S | D | F | G | H | J | K | L | ; | ↵ |
| ⏪ | Z | X | C | V | B | N | M | < | > | ? | ⏩ |
| Ctrl | NEW | Alt | | | | | | Text A | Text B | ← | → |

Vertical control panel with five sliders and a TGO button.

Lower control panel with various buttons and a trackball.

- New Patient
- Applications
- Angle
- Steer
- X
- Y
- Z
- D
- C
- M
- 2D
- Depth / Zoom
- Focus
- Transducer
- Invert
- Triplex
- CW
- Power
- THI
- 3D / 4D
- UD 1
- Dual
- UD 3
- Text
- Pictogram
- Update View
- Escape Timer
- TGO / UD 2
- Clip Store
- Print / Store 2
- Review
- Select
- Set
- Caliper
- Print / Store 1
- Freeze

eXplore More

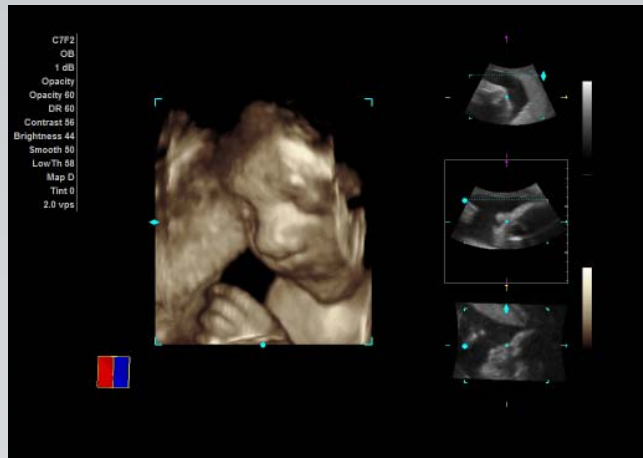
Exquisite details. Confident diagnoses.



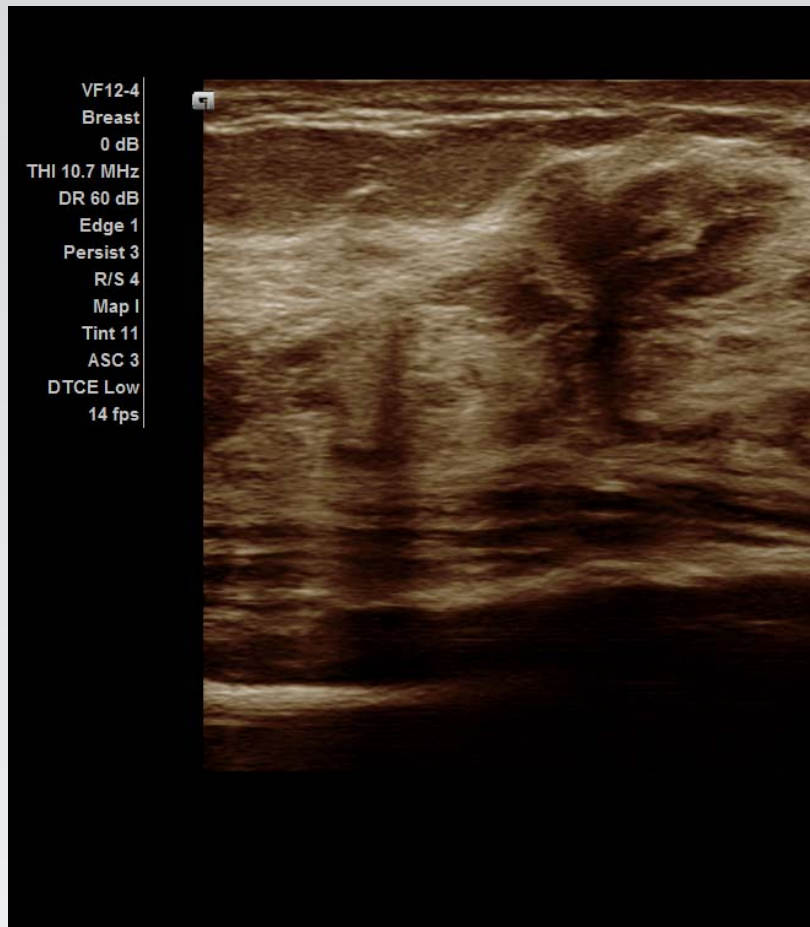
The ACUSON X700 system processes more information, more quickly for the best possible diagnosis. Advanced imaging technologies, including Dynamic TCE™ tissue contrast enhancement technology and Advanced SieClear™ spatial compounding, have been migrated from our premium platforms

to provide exceptional detail, clearer border definition and the ability to assess subtle changes in tissue. With its extensive feature set, the ACUSON X700 system delivers new levels of imaging performance across a wide range of clinical applications and patient body types.

fourSight™ 4D ultrasound
imaging technology
of the fetal face.



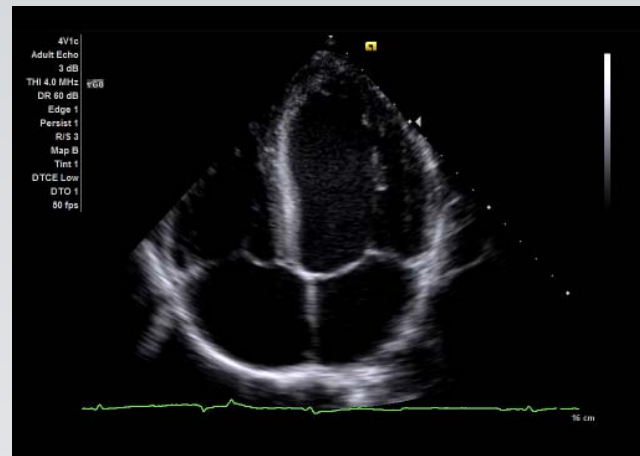
Exquisite detail resolution
of liver, IVC and aorta with
Dynamic TCE tissue contrast
enhancement technology.



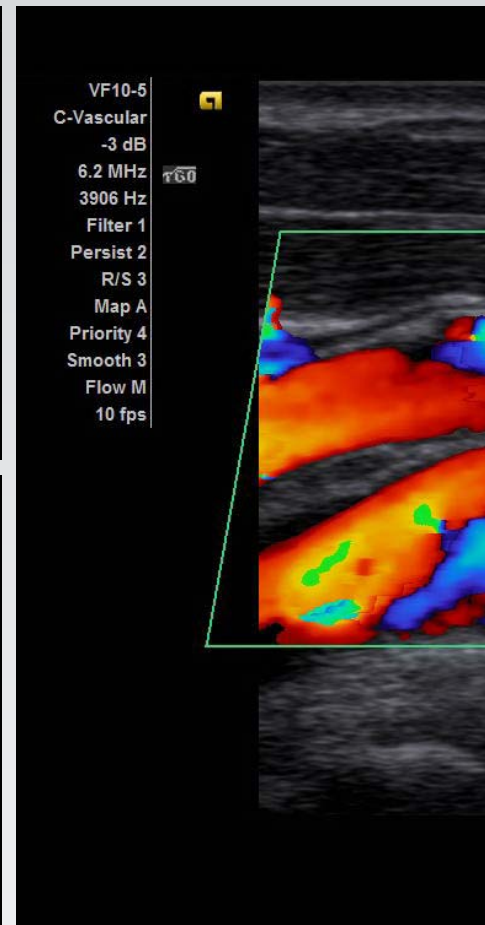
Advanced SieClear spatial
compounding enhances
visualization of irregular
breast mass.

Dynamic TCE tissue enhancement technology provides superb detail and contrast resolution of the left ventricle in an apical 4-Chamber view of the heart with high frame rates.

Superb visualization of flow dynamics in carotid artery bifurcation.

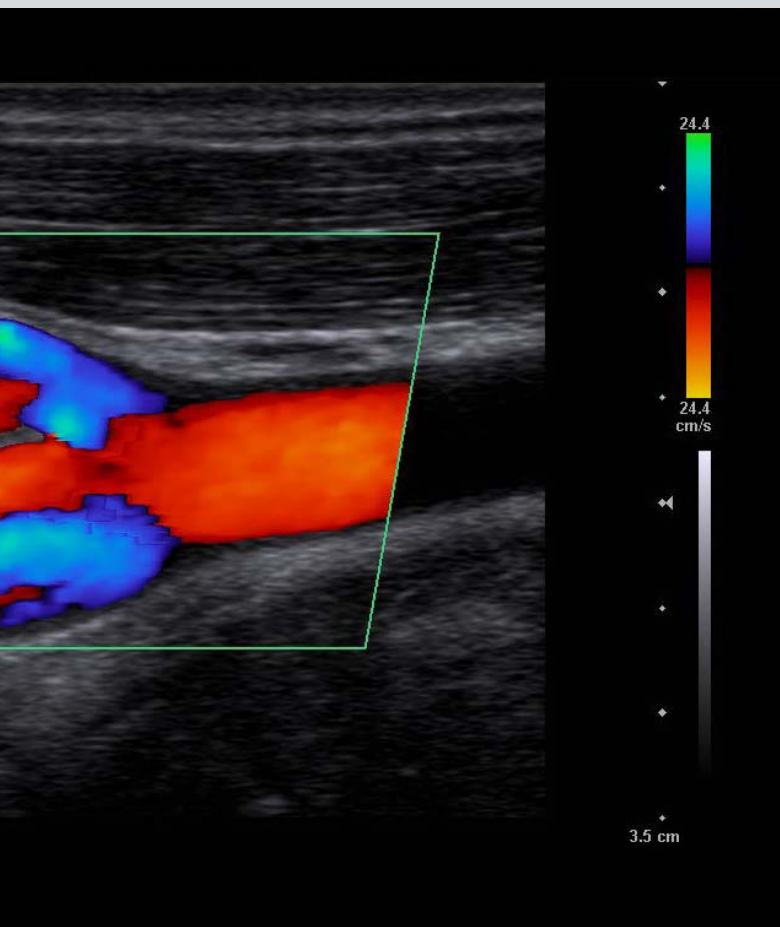


Dynamic TCE tissue contrast enhancement technology enhances detail and contrast resolution of complex ovarian mass.





The wide footprint of the VF12-4 transducer enables complete visualization of complex hydrocele.



Superior color Doppler sensitivity is demonstrated by the regurgitant jet of the aortic valve.



Diastole
Report
Summary
Page 1/3

P 100% MI 0.67
TIS 0.9 TIB 1.3
Velocity
PI Auto
Acceleration
RI
PI Manual
Flow Volume

PW
Velocity Ratio
Time
HR
VTI
MDA Position

33 mm/s
3 cm
F028
Images 37
Clip 1

SIEMENS

eXperience More

It looks innovative. It is innovative.



With the ACUSON X700 system, the innovative design reflects a commitment to enhance every facet of the ultrasound experience – from imaging performance and ease to throughput efficiency and user comfort. Thoughtful design innovations, attention to detail and clinically relevant technologies, such as

syngo[®] Auto OB measurements, reduce repetitive tasks, automate routine measurements and boost consistency of repeat procedures. The ACUSON X700 system delivers exquisite image detail and streamlined workflow – exam after exam, patient after patient.

eXpect More

Reliable, expandable, flexible.



Delivering Siemens quality and reliability, you can always expect more with the ACUSON X700 system. The platform is compatible with a variety of options and future updates for long-term investment protection. Since 1953, Siemens has been pioneering ultrasound to discover industry-leading solutions that help people live healthier lives.

Service that Fits Your Practice.

Siemens offers a variety of service plans that suit the needs of many different healthcare environments – delivering both superior support and valuable cost savings for any size clinic or medical setting. Siemens' coverage options provide protection from unexpected costs as well as fast and attentive service – allowing you to stay focused on the people in your care.

