

# FCR XG5000

FUJI COMPUTED RADIOGRAPHY

*A high-efficiency FCR reader offering quality imaging and all-round versatility for superior diagnostic capability*



# FCR

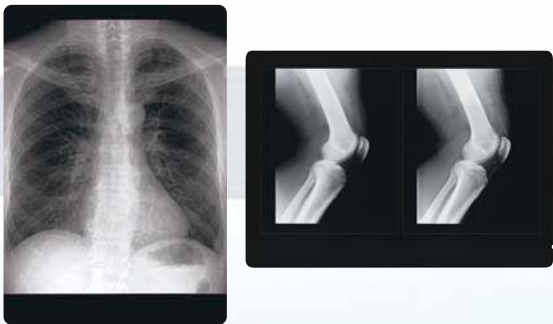
# Industry-standard digital imaging technology suits your diagnostic needs

Inheriting the high productivity of the FCR 5000-series readers, Fujifilm's new XG5000 has been engineered and designed for even greater user-friendliness and efficiency, making it the standard of excellence in the FCR reader line-up. Incorporating renowned Fuji image processing technology to yield wide-latitude images of high resolution and consistently high image quality, the XG5000's compact size and unexcelled operator convenience make it the reader of choice for general-purpose diagnostic needs.

XG5000

## All-purpose FCR

Compact in overall dimensions yet extremely powerful in specified applications, the XG5000 can provide chest, spine, head and other plain x-ray imaging, as well as spinal canal, urinary organ, and other contrast medium x-ray imaging and x-ray tomography.



## FCR Standard in Image Quality: Image Intelligence™ Inside

"Image Intelligence™" – a set of sophisticated digital image-processing software technologies available through the CR Console – processes image data and optimizes final output.



## Convenience and Efficiency

A convenient stacker accommodating four cassettes at once minimizes operator waiting, enabling processing capacity of up to 120 14" x 14" films/hour.



## Enhanced Inter-operability through CR Console

Standardized control of image plus data processing through the CR Console ensures consistently optimized "first-up" images, reducing time for image adjustment. Image quality is consistent with other Fujifilm CR readers, minimizing user learning.



## Compact Size

Operator convenience and versatility benefit from reduced exterior dimensions, including a new smaller footprint of 655mm x 740mm.



## Quick Image Delivery

Connected to the CR Console, 14" x 17" images in 10-pixel resolution are viewable in only 39 seconds from time of exposure, enabling quick turn-around. When printing on DRYPIX 7000, final prints are available within 115 seconds of initial cassette insertion.



# FUJIFILM FCR XG5000 Specifications

**Standard Components:**

- FCR XG5000 Image Reader (Model: CR-IR 362)
- AC Power Cord

**Other System Components:**

- CR Console Plus (sold separately)
- Image Recorder : FL-IMD, FM-DP L, DRYPIX 1000/3000/7000
- ID Card Writer
- FCR Data Management System

**Supplies:**

Imaging Plate Cassette:

- Type C: 14" x 17" (35 x 43cm), 14" x 14" (35 x 35cm), 10" x 12", 8" x 10", 24 x 30cm, 18 x 24cm

Imaging Plate:

- ST-VI (standard type): 14" x 17" (35 x 43cm), 14" x 14" (35 x 35cm), 10" x 12", 8" x 10", 24 x 30cm, 18 x 24cm
- HR-V (high resolution type): 24 x 30cm, 18 x 24cm

**Time Required for IP Feed/Load:**

IP auto feed/load mechanism cycle time

| IP Type               | Required Time   |
|-----------------------|-----------------|
| 14" x 17" (35 x 43cm) | Approx. 60 sec. |
| 14" x 14" (35 x 35cm) | Approx. 54 sec. |
| 10" x 12"             | Approx. 50 sec. |
| 8" x 10"              | Approx. 40 sec. |
| 24 x 30cm (ST)        | Approx. 51 sec. |
| 18 x 24cm (ST)        | Approx. 42 sec. |
| 24 x 30cm (HR)        | Approx. 65 sec. |
| 18 x 24cm (HR)        | Approx. 55 sec. |

**Processing Capacity**

(in the high-pixel density two-image output format):

| IP Type               | When connected to DRYPIX 7000/CR Console Light |
|-----------------------|--|
| 14" x 17" (35 x 43cm) | Approx. 103 IPs/hr.                            |
| 14" x 14" (35 x 35cm) | Approx. 120 IPs/hr.                            |
| 10" x 12"             | Approx. 128 IPs/hr.                            |
| 8" x 10"              | Approx. 165 IPs/hr.                            |
| 24 x 30cm (ST)        | Approx. 128 IPs/hr.                            |
| 18 x 24cm (ST)        | Approx. 165 IPs/hr.                            |
| 24 x 30cm (HR)        | Approx. 90 IPs/hr.                             |
| 18 x 24cm (HR)        | Approx. 110 IPs/hr.                            |

**Time to Print on DRYPIX 7000 through network via CR Console:**

Approx. 110 sec.

**Image Reading**

| Reading Size          | Standard Pixel-density         |                  | Hi Pixel-density               |                  |
|-----------------------|--------------------------------|------------------|--------------------------------|------------------|
|                       | Spatial Resolution (Pixels/mm) | Number of Pixels | Spatial Resolution (Pixels/mm) | Number of Pixels |
| 14" x 17" (35 x 43cm) | 5                              | 1760 x 2140      | 10                             | 3520 x 4280      |
| 14" x 14" (35 x 35cm) | 5                              | 1760 x 1760      | 10                             | 3520 x 3520      |
| 10" x 12"             | 6.7                            | 1670 x 2010      | 10                             | 2505 x 3015      |
| 8" x 10"              | 10                             | 2000 x 2510      | 10                             | 2510 x 2000      |
| 24 x 30cm (ST)        | 6.7                            | 1576 x 1976      | 10                             | 2364 x 2964      |
| 18 x 24cm (ST)        | 10                             | 1770 x 2370      | 10                             | 1770 x 2370      |

**Number Of Stackers:** 4

**Reading Gray Scale:** 12 bits

**Network:** 10 Base T/100 Base T

**Dimensions (W x D x H):** 655 x 740 x 1480mm (26" x 29" x 58")

**Weight:** 285kg (628lbs.)

**Power Supply Conditions:**

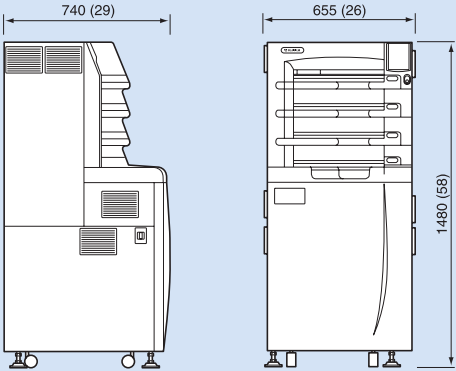
Single phase 50-60Hz  
120-240V ±10%  
7A (max)

**Environmental Conditions:**

- Operating Conditions:  
Temperature: 15-30°C  
Humidity: 40-80%RH (No dew condensation)
- Non-operating Conditions:  
Temperature: 0-45°C  
Humidity: 10-90%RH (No dew condensation)

**Dimensions**

Unit: mm (in.)



**IP Cassette with Imaging Plate**

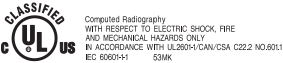


**Type C Cassette:**  
35.4 x 43.0cm/25.2 x 30.3cm are shown, other sizes also available.

**Longview Cassette:**  
35.4 x 83.7cm/25.2 x 58.0cm



"Image Intelligence™" is a set of sophisticated digital image-processing software technologies that are incorporated in the FCR XG5000.



Specifications and PC requirements are subject to change without notice.  
All brand names or trademarks are the property of their respective owners.  
FCR Mammography is not for sale in the USA.

